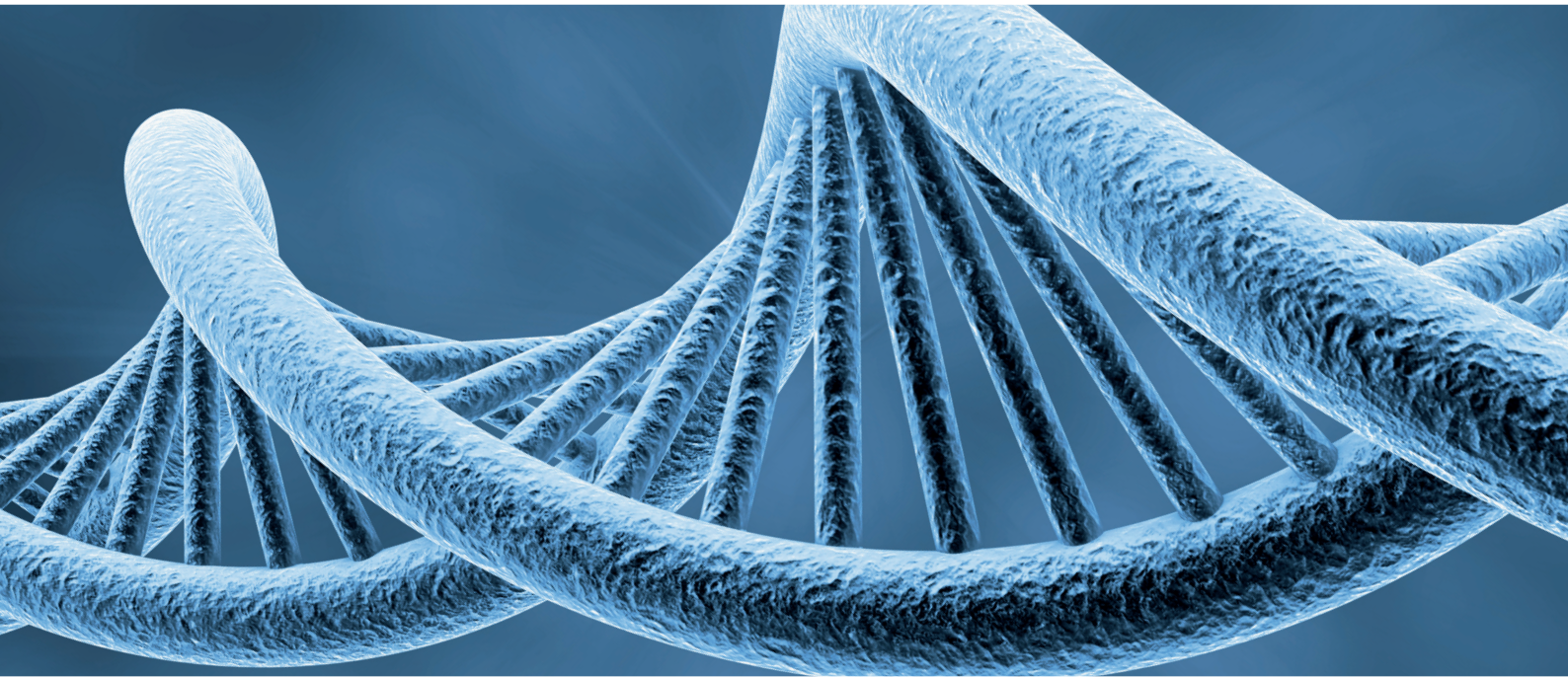
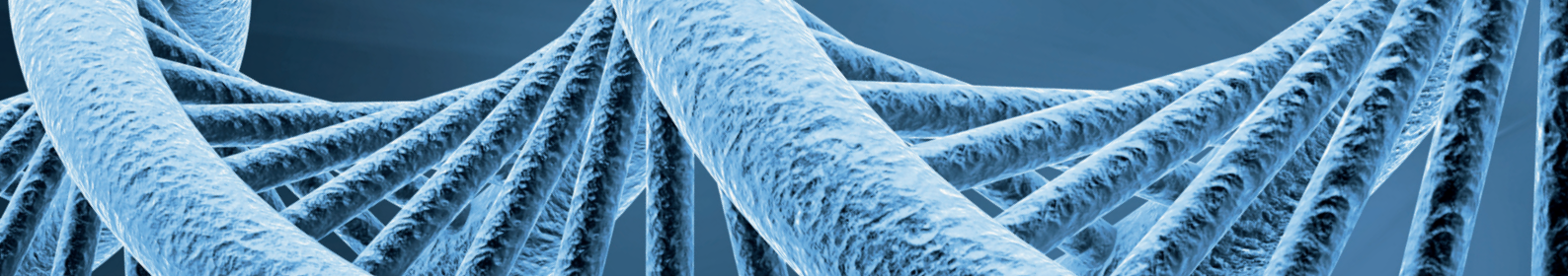


MIKROGEN
D I A G N O S T I K



**MOLECULAR DIAGNOSTICS
FOR INFECTIOUS DISEASES**

Real-time PCR
DNA & RNA Extraction



Easy, safe, flexible and compatible

Convince yourself of our high-quality products and our wide product range

Safe diagnosis

- High sensitivity and specificity
- High safety: internal control for monitoring nucleic acid extraction (RNA/DNA) and real-time PCR inhibition in each reaction
- CE label: Our PCR tests meet the high standard of the EC directive 98/79/EC on in vitro diagnostic medical devices

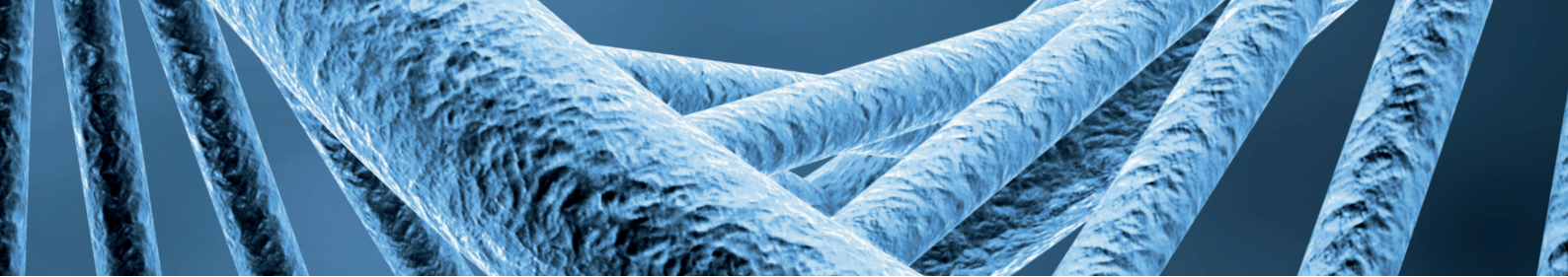
Flexible and compatible

- Compatible with most common real-time PCR cyclers
- Compatible with different RNA/DNA extraction methods



Respiratory Infections

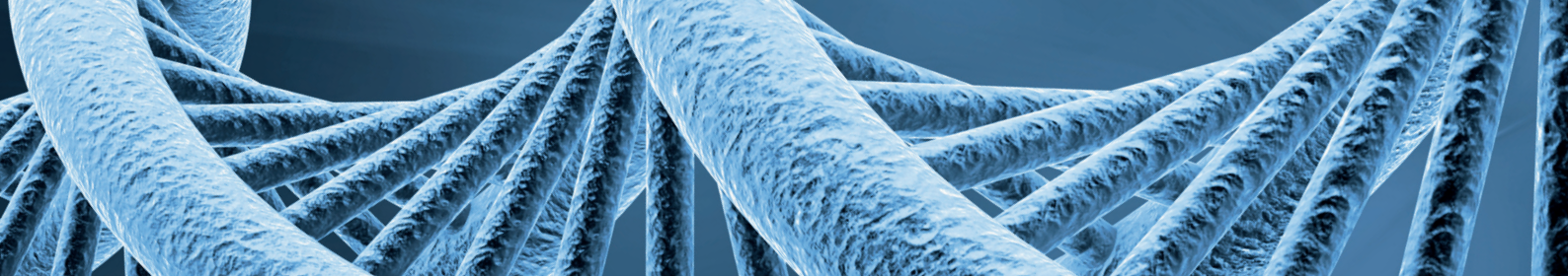
<i>ampliCube</i>	single-plex	multi-plex	Article no.	rxn
<i>ampliCube</i> Respiratory Bacterial Panel 1 Real-time PCR for detection & semi-quantification of Chlamydia pneumoniae, Mycoplasma pneumoniae, Legionella spp.		x	50101	50
<i>ampliCube</i> Respiratory Bacterial Panel 2 Real-time PCR for detection of Bordetella pertussis, Bordetella parapertussis, Bordetella holmesii		x	50111	50
<i>ampliCube</i> Respiratory Bacterial Panel 3 Real-time PCR for detection & semi-quantification of Streptococcus pneumoniae, Staphylococcus aureus, Haemophilus influenzae		x	50121	50
<i>ampliCube</i> Respiratory Bacterial Panel 4 Real-time PCR for detection & semi-quantification of Moraxella catarrhalis, Klebsiella pneumoniae/oxytoca		x	50131	50
<i>ampliCube</i> Coronavirus Panel Real-time RT-PCR for detection of Middle East Respiratory Syndrome Coronavirus (MERS-CoV), SARS-Coronaviruses (including SARS-CoV-2 / COVID 19), Human Coronaviruses (NL63, OC43, 229E, HKU1)		x	50142	50
<i>ampliCube</i> Coronavirus SARS-CoV-2 Real-time RT-PCR for screening and confirmation for SARS-Coronaviruses and SARS-CoV-2 / COVID-19; SARS-CoV screening by means of E-Gene and SARS-CoV-2 confirmation by means of specific marker in the Orf1a		x	50143 50144	50 500
<i>ampliCube</i> SARS-CoV-2 Variants Real-time Multiplex RT-PCR assay for the specific detection of highly infectious Coronavirus SARS-CoV-2 variants (Alpha, Beta, Gamma) and their differentiation		x	50145	50
<i>ampliCube</i> Respiratory Flu & SARS-CoV-2 Real-time RT-PCR for the detection of Influenza A, Influenza B and SARS-CoV screening by E gene and SARS-CoV-2 confirmation by specific marker in Orf1a. Test is designed for 5-channel real-time PCR cyclers		x	50163 50164	50 500
<i>ampliCube</i> Respiratory Flu & SARS-CoV-2 LC Kit is designated for Roche LightCycler® 480 II		x	50173 50174	50 500



ampliCube Respiratory Viral Panel 1 Real-time RT-PCR for detection of Influenza A, Influenza B, Influenza A H1N1		x	50102	50
ampliCube Respiratory Viral Panel 2 Real-time RT-PCR for detection of Parainfluenza 1-4, Bocavirus		x	50112	50
ampliCube Respiratory Viral Panel 3 Real-time RT-PCR for detection of Parechovirus, Metapneumovirus, RSV (A,B)		x	50122	50
ampliCube Respiratory Viral Panel 4 Real-time RT-PCR for detection of Rhinovirus/Enterovirus, Adenovirus		x	50132	50
ampliCube Respiratory Viral Panel 5 Real-time RT-PCR for detection of Influenza A, Influenza B, RSV (A, B)		x	50152	50
alphaCube	single-plex	multi-plex	Article no.	rxn
alphaCube Bordetella Real-time PCR for detection of Bordetella pertussis, Bordetella parapertussis		x	830559 830560	96 32
alphaCube Legionella Real-time PCR for detection of Legionella pneumophila	x		830539 830540	96 32
alphaCube PanLegionella Real-time PCR for detection of Legionella spec.	x		830535 830536	96 32
alphaCube MTB Real-time PCR for detection of Mycobacterium tuberculosis complex	x		830561 830562	96 32
alphaCube MTB/NTM/MAC Real-time PCR for the detection of Mycobacterium tuberculosis complex (MTB), Non Tuberculous Mycobacteria (NTM) and Mycobacterium avium complex (MAC)		x	830566 830567	96 32
alphaCube Entero 2.0 Real-time RT-PCR for detection of Enterovirus (Coxsackievirus A, Coxsackievirus B, Echovirus, numbered Enteroviruses, Polioviruses)	x		830509 830510	96 32
alphaCube respiraRNA 3.0 Real-time RT-PCR for detection of Influenza A and B, Respiratory Syncytial Virus (RSV)		x	830507 830508	96 32

Gastrointestinal Infections

ampliCube	single-plex	multi-plex	Article no.	rxn
ampliCube Gastrointestinal Bacterial Panel 1 Real-time PCR for detection of Campylobacter, Salmonella, Yersinia enterocolitica		x	50001	50
ampliCube Gastrointestinal Bacterial Panel 2 Real-time PCR for detection of VTEC (STX1+2), Shigella/EIEC and ETEC		x	50011	50
ampliCube Gastrointestinal Viral Panel 1 Real-time RT-PCR for detection of Norovirus (Genogroup I and II), Rotavirus, Adenovirus		x	50002	50
ampliCube Gastrointestinal Viral Panel 2 Real-time RT-PCR for detection of Sapovirus, Astrovirus		x	50012	50
alphaCube	single-plex	multi-plex	Article no.	rxn
alphaCube gastroplexVirus Real-time RT-PCR for detection of Norovirus (Genogroup I & II), Adenovirus, Rotavirus		x	830501 830502	96 32
alphaCube gastroplexVirus PLUS 2.0 Real-time RT-PCR for detection of Norovirus Genogroup I, Norovirus Genogroup II, Adenovirus, Rotavirus, Astrovirus, Sapovirus		x	830503 830504	96 32
alphaCube Entero 2.0 Real-time RT-PCR for detection of Enterovirus (Coxsackievirus A, Coxsackievirus B, Echovirus, numbered Enteroviruses, Polioviruses)	x		830509 830510	96 32
alphaCube Noro Real-time RT-PCR for detection of Norovirus (Genogroup I & II)	x		830513	96



Sexually Transmitted Diseases

<i>ampliCube</i>	single-plex	multi-plex	Article no.	rxn
<i>ampliCube</i> STD Panel 1 Real-time PCR for detection of Chlamydia trachomatis, Neisseria gonorrhoeae, Mycoplasma genitalium		x	50301	50
<i>ampliCube</i> STD Panel 2 Real-time PCR for detection of Trichomonas vaginalis, Mycoplasma hominis, Ureaplasma urealyticum/parvum		x	50302	50
<i>ampliCube</i> STD Panel 3 Real-time PCR for detection of Herpes Simplex Virus (1, 2), Treponema pallidum		x	50303	50

Tick-borne Infections

<i>alphaCube</i>	single-plex	multi-plex	Article no.	rxn
<i>alphaCube</i> Babesia Real-time PCR for detection of Babesia divergens, Babesia microti and Babesia sp. EU1	x		830525 830526	96 32
<i>alphaCube</i> Borrelia Real-time PCR for detection of Borrelia burgdorferi (sensu lato)	x		830527 830528	96 32
<i>alphaCube</i> Borrelia/Rickettsia Real-time PCR for detection of Borrelia burgdorferi (sensu lato) and Rickettsia.		x	830576 830577	96 32
<i>alphaCube</i> Ehrlichia Real-time PCR for detection of E. chaffeensis, E. ewingii, Anaplasma phagocytophilum	x		830533 830534	96 32
<i>alphaCube</i> Rickettsia Real-time PCR for detection of Rickettsia	x		830574 830575	96 32
<i>alphaCube</i> TBE Real-time RT-PCR for detection of Tick Borne Encephalitis virus	x		830519 830520	96 32
<i>alphaCube</i> TBE/WNV Real-time PCR for detection of Tick Borne Encephalitis virus, West Nile virus		x	830568 830569	96 32
<i>alphaCube</i> Q-Fever Real-time PCR for detection of Coxiella burnetii	x		830555 830556	96 32

Tropical Fever

<i>alphaCube</i>	single-plex	multi-plex	Article no.	rxn
<i>alphaCube</i> TBE/WNV Real-time PCR for detection of Tick Borne Encephalitis virus, West Nile virus		x	830568 830569	96 32
<i>alphaCube</i> Tropical Fever 1 Real-time RT-PCR for detection of Zika virus, Chikungunya virus, Dengue viruses 1-4 and Yellow Fever virus		x	830563 830564	96 32

Hepatitis E

<i>ampliCube</i>	single-plex	multi-plex	Article no.	rxn
<i>ampliCube</i> HEV 2.0 Quant Real-time RT-PCR for detection & quantification of HEV (Hepatitis E virus)	x		55002	50



Multi Drug Resistance

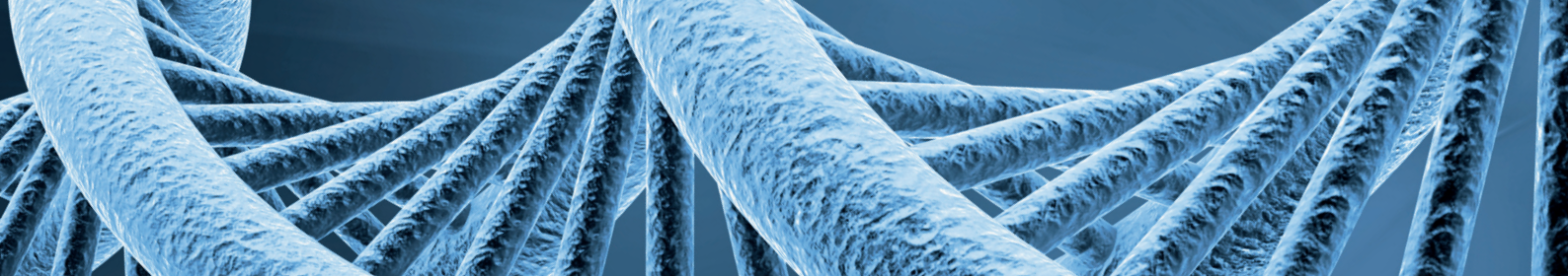
ampliCube	single-plex	multi-plex	Article no.	rxn
ampliCube MDR Panel 1 Real-time PCR for detection of NDM, KPC, GIM (German Impipenemase)		x	50401	50
ampliCube MDR Panel 2 Real-time PCR for detection of NDM, KPC, SPM (Sao Paulo Metallo-β-Lactamase)		x	50402	50
ampliCube MDR Panel 3 Real-time PCR for detection of CTX-M15 (group 1) and CTX-M14 (group 9)		x	50403	50
ampliCube MDR Panel 4 Real-time PCR for detection of IMP, VIM, OXA-48-like		x	50404	50
ampliCube MDR Panel 5 Real-time PCR for detection of NDM, OXA-23-like / OXA-24/40-like; OXA-58-like; ISAb _a 1 / OXA-51-like		x	50405	50
ampliCube MDR Panel 6 Real-time PCR for detection of cfr (A/B) / oprA, vanA, vanB		x	50406	50

Others

alphaCube	single-plex	multi-plex	Article no.	rxn
alphaCube GBS Real-time PCR for detection of Streptococcus agalactiae (Group B Streptococcus (GBS))	x		830547 830548	96 32
alphaCube HSV/VZV Real-time PCR for detection of Herpes Simplex Virus (HSV-1, HSV-2), Varicella Zoster virus		x	830572 830573	96 32
alphaCube MRSA 3.0 Real-time PCR for detection of methicillin-resistant Staphylococcus aureus (MRSA). The PCR targets are the orfX/SSCmec junction and the mecA/mecC genes.		x	830557 830558	96 32
alphaCube PVL-MRSA Real-time PCR for detection of methicillin-resistant S. aureus (MRSA), methicillin-sensitive S. aureus (MSSA), methicillin-resistant coagulase-negative S. (MRConS), Community-acquired MRSA (PVL toxin, pathogenic factor)		x	830570 830571	96 32

Additional reagents

	Article no.	runs
ampliCube Color Compensation Kit (5-Plex for Roche LightCycler® 480 II)	50502	2
ampliCube Color Compensation Kit (5-Plex for Roche cobas z 480 Analyzer)	50503	2
ampliCube Dye calibration kit for the Quant Studio 5 PCR cycler (5-Plex, is only necessary with 5-Plex PCR kits)	50504	2
ampliCube CFX 96 (BioRad) dye calibration	50505	2
alphaCube LC480 Color Compensation	831009	1
alphaCube Color Compensation Kit RespiraRNA 3.0 Color Compensation Kits and Dye Calibration Kits are used for dye calibration of a real-time PCR cycler with the aim to compensate dye overlaps between the dye channels. In order to analyze Multiplex real-time PCR kits on the LightCycler® 480 II or cobas z 480 analyzer, a Color Compensation File must be created in advance. When using Quant Studio 5 (QS5), a calibration must be performed in advance.	831032	1



Safe and compact Setup, amplification and interpretation

Combine Myra and Mic with our *ampliCube* products
Space-saving instruments for fast and safe reaction setup and amplification



Myra – Liquid handling system

Dimensions (H/W/L)	31 x 35 x 46 cm
Weight	9 kg
Samples	flexibel
Art. no.	31269



Mic – qPCR cycler

Dimensions (H/W/L)	13 x 15 x 15 cm
Weight	2 kg
Samples	48
Art. no.	31154

Consumables and various adaptors (for Myra) can be purchased from MIKROGEN.

Flexible and easy application of *ampliCube* real-time PCR kits

Use of different real-time PCR cyclers and easy interpretation by supported software

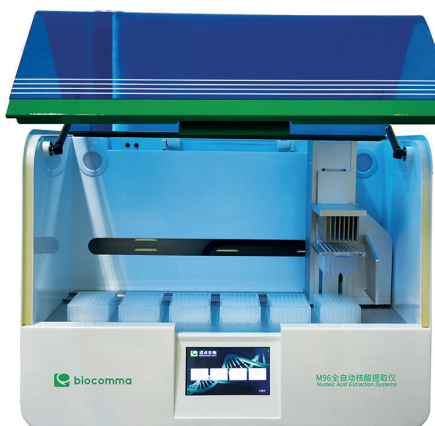
Cycler	<i>ampliCube</i> product line	FastFinder software
Mic (Magnetic Induction Cycler)	validated	available soon
Roche LightCycler® 480 Instrument II	validated	validated
Qiagen Rotor-Gene® Q	validated	validated
Bio-Rad CFX 96	validated	–
Applied Biosystems (QuantStudio™ 5 Dx)	validated	–
Stratagene Mx3000P	compatible	–

On request we would be pleased to inform you about other PCR-cyclers

Fast, easy and high throughput Extraction with benchtop instruments

Biocomma instruments for nucleic acid (RNA/DNA) extraction

Automated extraction based on magnetic-bead technology for different throughput levels



Biocomma M96

Dimensions (H/W/L)	76 x 48 x 57 cm
Weight	59 kg
Samples	96
Art. no.	31292



Biocomma M48

Dimensions (H/W/L)	54 x 50 x 46 cm
Weight	40 kg
Samples	48
Art. no.	31328



Biocomma M32

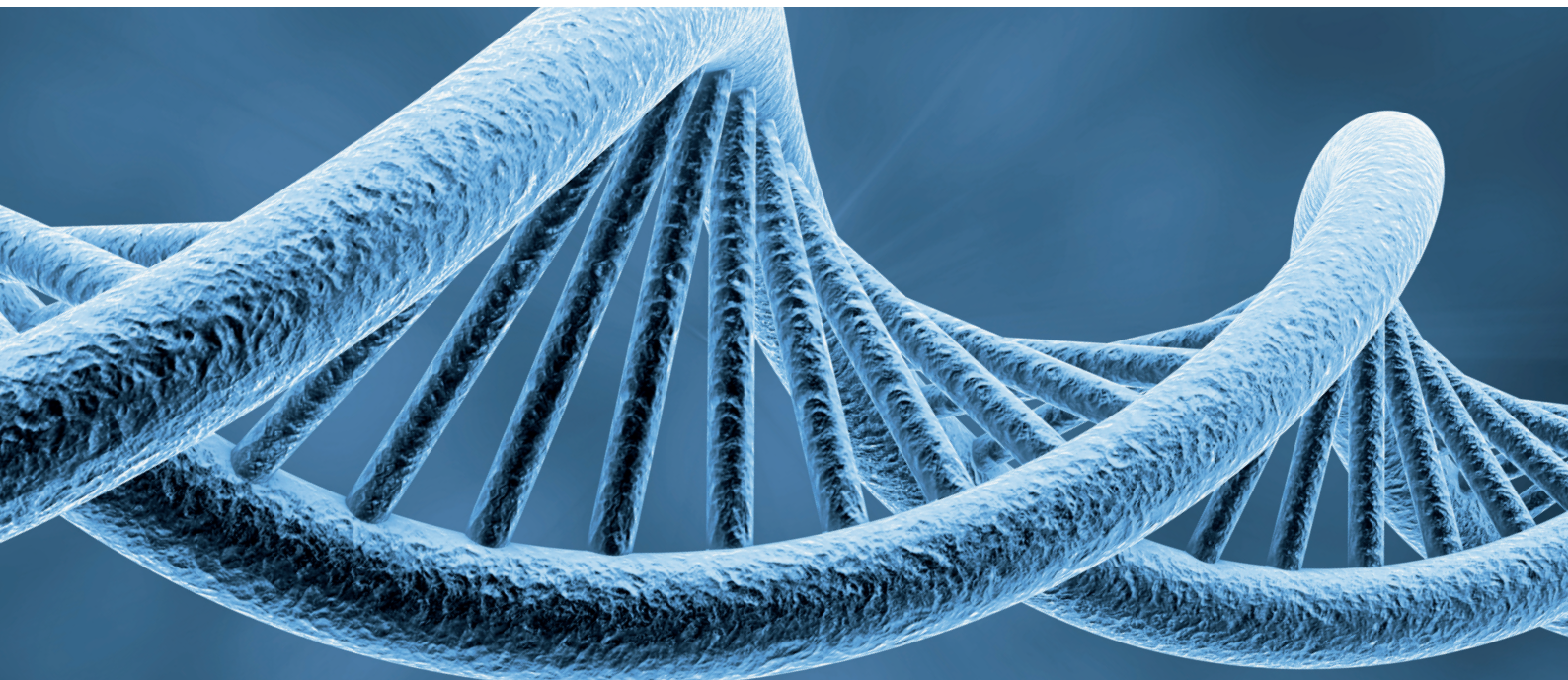
Dimensions (H/W/L)	40 x 42 x 44 cm
Weight	25 kg
Samples	32
Art. no.	31291

Consumables	Description	PE	Art. no.
96-Well Collection Plate	96-Well Collection Plates, 2,2 ml, round Well, U-Bottom, for M32, M48 und M96	24	31314
8-magnetic sets	magnetic rod cover for the M32 and M48	400 (200 x 2)	31315
96-magnetic sets	magnetic rod cover for the M96	36	31316

RNA/DNA extraction – our *alphaClean* product line

Fast, easy, clean and high yields – our new *alphaClean* product line is characterized by the isolation of nucleic acids from different starting materials

Products and reagents for sample preparation	PE	Art. no.
<i>alphaClean</i> Mag RNA/DNA Extraction system based on magnetic beads for isolation of nucleic acids (RNA/DNA) from clinical sample materials (e.g. whole blood, urine, tissue, stool, etc.), food and environmental samples. Ideal for use with Biocomma extractors (M96, M48 and M32), use with further magnet-particle based extractors is also possible.	200 Isolations 800 Isolations	831002 831028
<i>alphaClean</i> Proteinase K Proteinase K from Tritirachium album, Molecular Biology Grade, lyophilized, Activity: ≥ 2.5 U/mg (Casein, 37°C).	200 mg 800 mg	831025 831031
<i>alphaClean</i> Pure RNA/DNA Spin column based system for isolation of nucleic acids (RNA/DNA) from clinical sample materials (e.g. whole blood, urine, tissue, stool, etc.), food and environmental samples.	100 Isolations 200 Isolations	831026 831004
<i>alphaClean</i> Collection tube 2 ml reaction tubes, suitable for <i>alphaClean</i> Pure RNA/DNA spin columns. DNase-, RNase- and pyrogen-free.	1000	831027



MIKROGEN GmbH
Floriansbogen 2-4
82061 Neuried
Germany

Phone +49 89 54801-0
Fax +49 89 54801-100

mikrogen@mikrogen.de
www.mikrogen.de