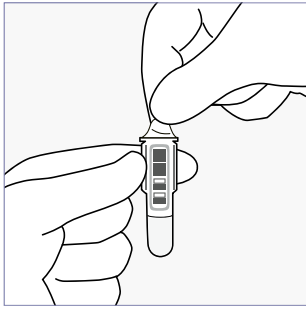
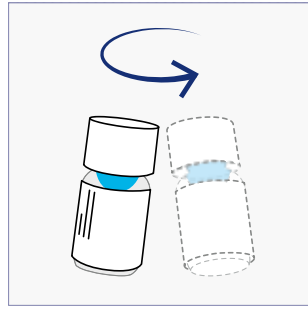


# QuikRead go<sup>®</sup> easy CRP

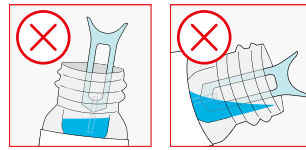
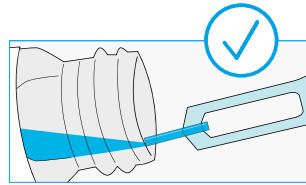
Allow the control to stabilize for **30 minutes at room temperature** before use. Pay attention to the complete tightening of the self-sealing screw-cap.



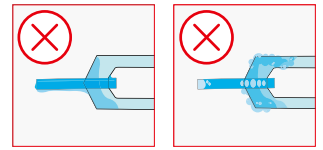
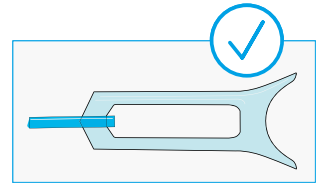
**1** Remove the foil cover from the cuvette. Do not touch the clear flat surfaces in the lower part of the cuvette.



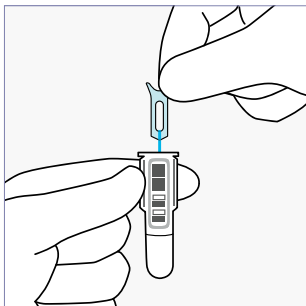
**2** Mix the control vial **gently** by swirling. **Do not shake** to prevent foaming! In case a film appears on top of the vial, wait until it bursts or carefully remove it with a corner of lint-free paper. Keep the bottleneck clean.



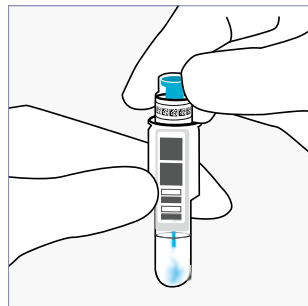
**3** Tilt the control vial until the control solution reaches the bottleneck. Place the sample collector almost horizontally just **below the control surface at the mouth of the vial**. Fill the capillary part of the sample collector completely.



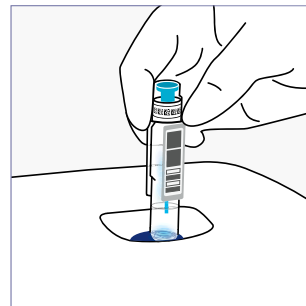
**Note!** Do not place the sample collector in the foam or inside the control vial. If there is excess sample or air bubbles on the sample collector, discard it and take a new sample. Do not wipe the sample collector.



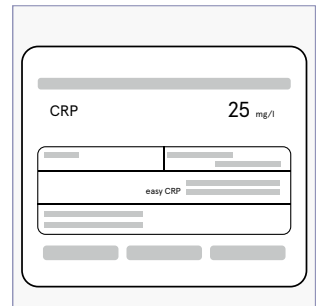
**4** Insert the sample collector into the cuvette within 2 minutes.



**5** Close the cuvette tightly with the easy CRP reagent cap. Do not press down the turquoise inner part of the reagent cap. **Perform the test within 15 minutes.**



**6** Choose **Quality control** on the display of the QuikRead go Instrument. Insert the cuvette into the measurement well of the instrument. The barcode should be facing you.



**7** The result appears on the display and the cuvette rises up automatically when the measurement is completed. The acceptance limits of the control are in the labelling.

## Storage

Opened vial is stable for 2 months at 2...8°C.

**Note!** To ensure the self-sealing mechanism of the screw-cap works correctly, it must be screwed until it no longer tightens (2 full rounds). Avoid using the last drops of the control.