

Contact info

Aidian Netherlands
 info@aidian.nl / +31 (0)317 35 18 38
 For orders: cs@aidian.nl

aidian.nl
 quikread.com

QuikRead go CRP	Cat. no.
QuikRead go CRP, 50 tests including capillaries and plungers	OD-135171
QuikRead go CRP Control	OD-153764
QuikRead go CRP Control High	OD-153763

QuikRead go CRP+Hb	Cat. no.
QuikRead go CRP+Hb, 50 tests including capillaries and plungers	OD-140068
QuikRead go CRP Control	OD-153764
QuikRead go CRP Control High	OD-153763
QuikRead go Hb Control	OD-141154

QuikRead go Strep A	Cat. no.
QuikRead go Strep A, 50 tests including controls	OD-135883

QuikRead go iFOBT	Cat. no.
QuikRead go iFOBT, 50 tests	OD-151051
QuikRead iFOB Sampling set, 50 devices	OD-151052
QuikRead go iFOBT Control Quantitative	OD-152390
QuikRead FOB Positive Control	OD-06027

QuikRead go Instrument	Cat. no.
QuikRead go Instrument (FI, SE, NO, DK, CZ, SK, PL, HU)	OD-135867
QuikRead go Instrument (other languages)	OD-133893

QuikRead go HbA1c	Cat. no.
QuikRead go HbA1c, 25 tests including QuikRead go Sample Collector 1µl	OD-151058
QuikRead go HbA1c Control Set	OD-154520

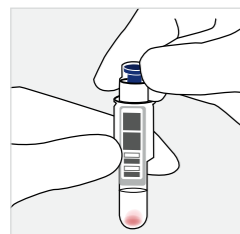
QuikRead go wrCRP	Cat. no.
QuikRead go wrCRP, 50 tests including capillaries and plungers	OD-146521
QuikRead go CRP Control Low	OD-153765
QuikRead go CRP Control	OD-153764
QuikRead go CRP Control High	OD-153763

QuikRead go wrCRP+Hb	Cat. no.
QuikRead go wrCRP+Hb, 50 tests including capillaries and plungers	OD-146255
QuikRead go CRP Control Low	OD-153765
QuikRead go CRP Control	OD-153764
QuikRead go CRP Control High	OD-153763
QuikRead go Hb 10 µl Control	OD-153656

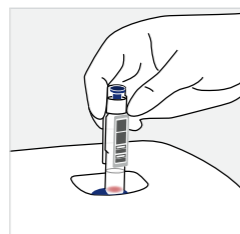
QuikRead go easy CRP	Cat. no.
QuikRead go easy CRP, 50 tests with QuikRead go Sample Collector 10µl	OD-153287
QuikRead go CRP Control Low	OD-153765
QuikRead go CRP Control	OD-153764
QuikRead go CRP Control High	OD-153763

Information about QuikRead go accessories: aidian.nl

It's so easy to use!



Sample



Measurement



Result

References

1. Crocker J et al. Implementation of Point-of-Care Testing in an Ambulatory Practice of an Academic Medical Center. *Am J Clin Pathol* 2014; 142:640-646.
2. Data on file.
3. Minnaard M et al. Analytical performance, agreement and user-friendliness of five creative protein point-of-care tests. *Scand J Clin Lab Invest* 2013; 73:627-634.
4. Hernández-Bou S et al. Evaluation of the bedside QuikRead go® CRP test in the management of febrile infants at the emergency department. *Eur J Clin Microbiol Infect Dis* 2017; 36:1205-1211.

Results you can trust.

QuikRead go® for point of care



AIDIAN

aidian.nl

AIDIAN

Save time and resources with a flexible point of care system.¹



QuikRead go[®]

Available analytes

HbA1c / CRP / CRP+Hb / Strep A / FOB



Point of care testing (POCT) can significantly improve clinical operations with cost reductions through improved practice efficiency. The economic benefits of POCT may be realized in both fee-for-service and global payment environments."¹

Get support for diagnosis and treatment decision with laboratory quality results just within minutes. Small and fully portable instrument enables testing in various healthcare settings.²⁻⁴

Have peace of mind with the high performing, robust, and easy to use test system. Exceptional connectivity features and automatic testing procedure ensures you better POC management and traceability.²⁻⁴

Immediate



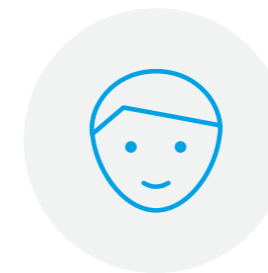
- Results in minutes
- Minimum hands-on time required
- Results you can trust during patient consultation
- Supports you on the spot in making the correct diagnosis and treatment decisions²⁻⁴

Reliable



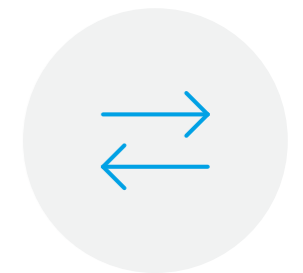
- Instrument read results ensure objective result interpretation
- Reliable results comparable to laboratory methods²⁻⁴
- Robust instrument
- Close to 50 000 QuikRead and QuikRead go instrument sold worldwide

Carefree



- No need for regular maintenance
- Plug and play
- Ready to use reagents
- Fully automatic testing procedure
- Interactive user interface available in 23 languages
- Battery use ensures full portability

Traceable



- Results with all testing details stored automatically to the instrument
- Patient ID and User ID for improved traceability
- Connectable to most hospital (HIS) and laboratory information (LIS) systems
- POCT1-A2 bidirectional connectivity with advanced features
- LIS01-A2 unidirectional connectivity